

# Douglas County Historical Society Watkins Museum of History 2022 Annual Report



**WATKINS**  
MUSEUM of HISTORY

DISCOVER THE REAL STORY



In March 2022, the Watkins Museum celebrated St. Patrick's Day in style with a float entry in the 35th Annual St. Patrick's Day Parade. The museum was one of three beneficiaries during the 2022 Parade season and received \$23,000 to expand its educational programs for children of all abilities.

## DCHS 2022 Board of Directors

### Officers/Executive Committee

Abby Ehling, President

Rosalea Postma-Carttar, Vice-president

Michael Delaney, Past President & Treasurer

Diana Carlin Pierron, Secretary

### Members

Shawn Alexander

Eric Anderson

Freddy Gipp

Tom Harper

Stephen Hill

Evan Holt

John Nalbandian

Jim Peters

Sandy Praeger

Deanell Tacha

Lauren Taylor

Verdell Taylor

Kathryn Tuttle

Lorie Vanchena

Jeff Weinberg

Sean Williams

## Museum Staff 2023

Steve Nowak, *Executive Director*

Riley Chambers, *Education Assistant*

Kate Grasse, *Collections Manager*

Will Haynes, *Director of Engagement and Learning*

John Jewell, *Business Manager*

Brittany Keegan, *Curator of Exhibitions and Collections*

Jane Nuessen, *Curriculum Specialist*

Geoff Pate, *Humanities Kansas Intern*

Cherrie Preut, *Education Coordinator*

Natalie Vondrak, *Communications and Outreach Manager*

Brittney Wilson, *Education Assistant*

Cover photo: Visitors engaging with the *Made in Lawrence* interactive located in one of the museum's recently completed third-floor core exhibits. The exhibit features 15 artifacts that were manufactured in Lawrence over the last 160 years. *Made in Lawrence* is one of nine new interactive experiences featured in the ten 3rd floor core exhibits which opened to the public in September 2022.

## From the DCHS President, Rosalea Postma-Carttar

A look back at 2022 reveals a year of unique highlights (unique even for the ever-inventive Watkins Museum). Here are just some of those highlights:

### FROM BEYOND OUR WALLS, RECOGNITION:

We are proud of the staff's accomplishments and awards in 2022. In March, the Watkin Museum was a beneficiary of the St. Patrick's Day Parade. In September, the grassroots non-profit Friends of Oak Hill dissolved and entrusted the Watkins with their significant assets. We, therefore, took on the new responsibility of fostering preservation and creating programs about Oak Hill Cemetery. Lastly, at the Kansas Museums Association Conference in November, Executive Director Steve Nowak received the Distinguished Service Award, and *The Museum Minute* series won the Technology Award.



### WITHIN OUR WALLS, EXHIBITS

Considering side by side the first and the last exhibits to open in 2022, we see evidence of the museum's ongoing efforts to include a broad range of history in this county. The first exhibit was *Confronting the Past: The Douglas County Community Remembrance Project*, which memorialized the 1882 lynching of George Robertson, Isaac King, and Pete Vinegar. The final exhibit is a pop-up traveling exhibit created with University of Kansas Museum Studies students: *Living Sovereignty: Sustaining Indigenous Autonomy in 'Indian Territory'* (on display through April 2023). Exhibits like these clearly manifest the explicit mission of the DCHS and the Watkins Museum of History "to inspire civic engagement and commitment to shaping a better future."

### WE ARE GRATEFUL FOR YOUR INTEREST IN DOUGLAS COUNTY HISTORY:

We hope that you will visit the Watkins Museum soon and often, in-person –to enjoy this magnificent building with its revealing interpretive exhibits and artifacts, and virtually – to see online exhibits via our newly-updated website, to view programs live or recorded, and to check out our fun and informative social media accounts.

---

## From the Director, Steve Nowak

The accomplishments of 2022 provide a foundation on which we will continue to build. In 2022, with support from a National Endowment for the Humanities grant, museum education staff developed new field trip lesson plans for four historic sites in Douglas County, including the Watkins Museum. One of the new lesson plans for the Watkins uses the new third floor exhibits to examine the role women have played in the growth and development of our community. Field trips based on this lesson plan will debut this spring, and the new lesson plans will guide the development of online learning resources in 2023 for teachers who cannot bring their classes to visit Douglas County historic sites in-person.



Another partnership among historic sites in Baldwin City, Clinton Lake, Eudora, Lecompton, and Lawrence, secured over \$700,000 in American Rescue Plan Act funding from Douglas County for capital improvement projects that improve preservation and increase public access at those sites. This grant will fund the upgrade of the aging passenger elevator at the Watkins Museum in 2023. This major investment, along with many donations and contributions of time and effort, will help us prepare to celebrate the most significant milestone on the horizon in 2023—the 90th anniversary of the founding of the Douglas County Historical Society.

# Public Engagement

2022 was another great year for partnerships and innovation. Inspired by important issues, excellent museum exhibits, and technological possibilities, Watkins staff held a range of in-person and online events. We started 2022 off strong with the widely attended and live streamed dedication of new informational kiosks at the Grover Barn Underground Railroad site. This was followed in February by a screening of the acclaimed film *Just Mercy*, which involved a partnership between the Watkins, Lawrence Arts Center, Lawrence Branch NAACP, and the Equal Justice Initiative. Our main event in March was a dream come true as we hosted a live streamed interview with Oscar-winning filmmaker Kevin Willmott titled *Film and Community*.

The summer saw further opportunities for collaborations on key topics. We helped host the premiere of *Then Three Were Taken*, a locally produced documentary about the 1882 Lawrence lynching, on our YouTube channel. For the 27th annual *Civil War on the Border* series in August, we embarked on a new effort to brand every year's series with a new theme; this year's events explored intersections between natural and human history during the Civil War era. We ended the year strong with a dynamic events calendar. To provide just one example, we hosted the first History Harvest for the Potter's Field Community Remembrance Project, introducing this major, ongoing scientific and cultural effort to the public for the first time.

## 2022 Engagements

Visitation: 7,455  
Private Groups: 1,213  
Research: 67  
Programming: 13,717  
Total: 22,452



A large audience participated in the online interview with filmmaker Kevin Willmott. Here, Professor Willmott holds up the 1969 comic book that first taught him about African American history.



The 27th *Civil War on the Border* series generated 1,053 participants thanks to several new events including a tour of the historic Robert H. Miller House. Here, Dennis Dailey presents to 40 people outside the home. Dennis was a dear friend of the Watkins and passed away in early 2023. He had a long connection to Lawrence history and made a significant impact to the community through his stewardship of the Miller house. He will be greatly missed.



Guest Curator Dr. Alyssa Cole gave a presentation on her and Curator Brittany Keegan's selection process of turning Gary Davis's 300 photo collection into an exhibition of 40 photos. The *Familiar Faces: The Gary Davis Photo Collection* exhibit celebrated the history and community fellowship of Black citizens in North Lawrence.



The annual family event *Tails and Traditions*, offered free crafts for more than 300 children and their families. This event is one of staff's favorite ways to kick off the holiday season!

# Education and Program Partners

Education staff offered a mixture of both digital and in-person activities throughout 2022. In winter and spring, classes focused on the life of early Lawrence citizen Maggie Herrington, while Tiny Tours and Homeschool lessons explored topics such as quilts, architecture, and inventions. Tours for Girl Scout troops and other area schools completed the season's programming. Later in the summer, the Summer Games program returned, and the museum hosted a three-week camp for Douglas County students. In the fall, homeschool lessons were rebranded as Homeschool History. Due to increased enrollment, these lessons expanded into two classes offered once a month!

## 2022 Education Numbers

Digital Field Trips: 94 students  
 Onsite Field Trips: 822 students  
 School Visits: 501 students  
 Education Conferences and Presentations: 33 participants  
 Total: 1,450 participants



Above: Education Coordinator Cherrie Preut and Education Assistant Riley Chambers lead a Homeschool History lesson on the evolution of communication and technology.

Left: Summer Games attendees learn about the chemistry of why blood color differs in specimens with a museum partner from the KU Natural History Museum.

## 2022 Programming Partners and Sponsors

American Red Cross  
 Ballard Center  
 Black Jack Battlefield and Nature Park  
 Cans for the Community  
 City of Lawrence  
 Clinton Lake Historical Society  
 Coneflower Consulting  
 Douglas County Heritage Conservation Council  
 Downtown Lawrence Inc.  
 Equal Justice Initiative  
 Eudora Area Historical Society  
 Explore Lawrence  
 Free State Brewing Co.  
 Freedom's Frontier National Heritage Area  
 Greenbush Virtual Academy  
 Guardians of Grover Barn  
 Hall Center for the Humanities  
 Haskell Cultural Center  
 Haskell Indian Nations University  
 Heritage League of Greater Kansas City  
 Humanities Kansas  
 Johnson County Museum  
 Kansas Authors Club  
 Kansas Museums Association  
 Kansas State Department of Education  
 KantArt Gallery

KU Mini College  
 KU Natural History Museum  
 KU School of Architecture  
 Latchkey Deli  
 Lawrence Arts Center  
 Lawrence Central Rotary Club  
 Lawrence Farmers Market  
 Lawrence Old-Fashioned Christmas Parade  
 Lawrence Parks and Recreation Department  
 Lawrence Preservation Alliance  
 Lawrence Public Library  
 Lawrence St. Patrick's Day Parade  
 Lawrence, Kansas Branch, NAACP  
 Lawrence, Kansas Juneteenth  
 Lawrence/Douglas County Community Remembrance Project  
 Lied Center of Kansas  
 Lecompton Historical Society  
 Max Kade Center for German-American Studies  
 Native Lands, LLC  
 Oak Hill Cemetery Potter's Field  
 Remembrance Project  
 Osher Lifelong Learning Institute  
 Tonganoxie Historical Society  
 University Women's Club  
 USD 497  
 Willow Domestic Violence Center



City of Lawrence



HALL CENTER  
 FOR THE  
 HUMANITIES



# Collections and Research

While staff placed a moratorium on accepting material donations during the renovation of the Kramer Family Research Room in 2022, several exciting additions aided us in preserving Lawrence's history. The museum's staff and Board of Directors made sure that two historic events last year, the KU Men's Basketball team winning the NCAA championship and a referendum vote in August that gained national attention, were represented in the collections. Museum staff collected sports memorabilia documenting the NCAA championship and the day after the Jayhawks' big win. After putting out a call for election materials, DCHS board members Kathryn Tuttle and Tom Harper donated yard signs and a poster created by artist Lisa Grossman documenting the strong feelings around the August referendum.

Artifacts highlighting key moments from the community's history also entered the collection. Before shutting its doors, Reuter Organ Company made sure pieces from their company's history, including an employee time clock used at their facility from 1917 until the 1980s and a wooden ammunition box made by the company to aid the war effort in the 1940s, made it into the DCHS collection. Joe Ramirez, a Lawrencian whose family lived for a time in the Santa Fe railroad workers' community, commonly known as La Yarda, took the time to draw a layout of what the railroad apartment complex looked like from his memory. Mr. Ramirez donated his drawing to Watkins Museum to further preserve the memory of La Yarda. In August 2022, filmmaker and KU Film and Media professor Kevin Willmott donated the tuxedo he wore to the 2019 Academy Awards ceremony, where he and co-writers Charlie Wachtel, David Rabinowitz, and Spike Lee won the Oscar for Best Adapted Screenplay. Thanks to generous donations, some of these artifacts will have custom-made display cases built in 2023 to join the Watkins Museum's third-floor permanent exhibits.

## Research Highlights:

Most research requests include queries for all types of collection materials, but the three most popular included:

- Topic or People: 33%
- Property-related: 34%
- Photograph/Image: 33%

## Popular Topics of 2022

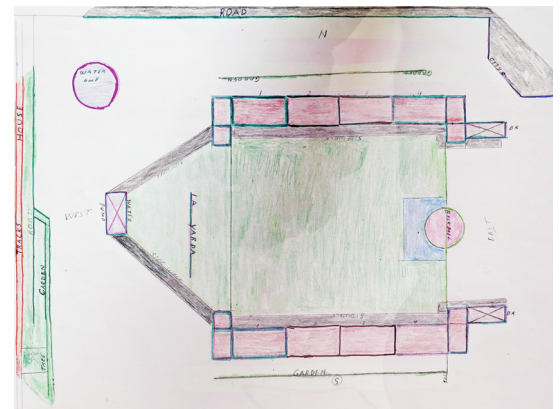
- Early Lawrence Businesses
- South Park
- Undertakers in Lawrence
- Douglas County Courthouse
- The first house in Lawrence

## 2022 Research Services Statistics

Research requests: 67  
Research appointments: 5  
Hours of research: 141.5  
Photographs reproduced: 47  
Documents reproduced: 33



Kevin Willmott purchased the tuxedo he wore to the 2019 Academy Awards from Weaver's Department Store in downtown Lawrence.



Drawing of La Yarda by Joe Ramirez.



The KU Men's Basketball Program earned its 6th National Championship in 2022. To mark this special occasion, museum staff sought out memorabilia for the collection to honor this historic event.

# Exhibitions

In 2022, the Watkins partnered with several individuals and organizations to round out its exhibits. The spring exhibit, *Mothers of Invention: Women Entrepreneurs and Innovators in Lawrence History*, allowed the museum to build on connections with business owners past and present. Susan Bateman, the owner of the Yarn Barn, lent a wide range of advertising and photographs from the business' 50+ years of operation. Susan Millstein, who owned several businesses, including what is now Sunflower Bike Shop, also shared photographs and newspaper articles about their stores, as well as a range of catalogs and business materials.

Watkins Museum borrowed photographs and materials from the Haskell Indian Nations University's Cultural Center for an exhibit created in association with Humanities Kansas. That exhibit, *From Then to Now: A Student History of Haskell University*, opened in December and will be on display until mid-May, 2023.

In late August, Watkins Museum got the opportunity to showcase the *See Lawrence: Parks and Green Spaces* poster exhibit. These posters, designed by artists in the community, were part of a larger project spearheaded by Lawrence Magazine to use the style of classic travel posters to showcase unique features in Douglas County. Watkins Museum borrowed twelve posters that served as the featured display in the second-floor gallery.

For the fifth year in a row, Watkins Museum borrowed and displayed the exhibit *Freedom Day: The History of Juneteenth*, created by Tamara Cash in partnership with Freedom's Frontier National Heritage Area and Humanities Kansas to commemorate Juneteenth.



The Willow Domestic Violence Center celebrated 45 years of public service at the Watkins Museum with a pop-up exhibit and event in October.



Marlene Davis points to a photo of herself and school friends in South Park. The photo was featured in the *Familiar Faces: The Gary Davis Photo Collection* exhibit.



Prior to the debut of the *Confronting the Past* exhibit, a soil collection ceremony was held in October to create a tangible remembrance of the 1882 lynching's victims. These jars are now in the museum's permanent collection.

## Changing Exhibitions

- *Not A Straight Path: The Fight for Queer Rights in Lawrence* (October 2021 - March 2022)
- *Armed with Knowledge: The Scientific Testing of Old Sacramento* (August 2021 - February 2022)
- *A Century of Care: The History of Lawrence Memorial Hospital* (August 2021 - January 2022)
- *Dear Friends: Lawrence's Literary Societies* (November 2021 - May 2022)
- *Confronting the Past: The Douglas County Community Remembrance Project* (February 2022 - August 2022)
- *Mothers of Invention: The Women Innovators of Lawrence* (April 2022 - October 2022)
- *Glenn Kappelman: A Life of Service* (May 2022 - November 2022)
- *Sister Cities: Bringing Lawrence to the World* (September 2022 - October 2022)
- *45 Years: The Willow Domestic Violence Center* (August 2022 - October 2022)
- *Familiar Faces: The Gary Davis Photo Collection* (May 2022 - November 2022)
- *Freedom Day: The History of Juneteenth* (June 2022 - July 2022)
- *See Lawrence: Parks and Green Spaces* (September 2022 - February 2023)
- *Genius in a Jar: Einstein's Brain in Lawrence* (November 2022 - April 2023)
- *Supplies in Demand: Shortages in Lawrence History* (November 2022 - March 2023)
- *From Then to Now: A Student History of Haskell Indian Nations University* (December 2022 - April 2023)

# Facilities and Volunteers

After eight years, the series of ten exhibits comprising the Watkins Museum's third floor core exhibition was completed in fall 2022. These exhibits highlight stories of the people and events that built our communities and shaped our unique character. In addition, they offer an array of interactive opportunities that encourage a hands-on approach to exploring history.

This undertaking would not have been possible without major grants from the Sunderland Foundation, Institute of Museum and Library Services, Capitol Federal Foundation, and the support of dozens of individual donors. These supporters are recognized in the stair hall on panels that all visitors will pass as they ascend the staircase.

Another major renovation included the transformation of the museum's former archives into a dedicated public research room. A donation by Carol J. Koenig, in loving memory of her mother, Daisy Viola Kramer Koenig, made this remarkable update possible. This project included the removal of a 1970s dropped ceiling and the restoration of the room's original finishes. The work returned the room to its grand 1888 appearance. New storage systems house research and collections materials. A grant from the Sunderland Foundation allowed the adjoining room to be restored and outfitted as an archival collections processing and storage area and curatorial workspace.



## Volunteers

In 2022, our nine volunteers provided an impressive 1,187 hours of volunteer service. The national value rate for a volunteer is \$29.95 per hour, meaning that our volunteers contributed \$35,550.65 of their time to the Watkins and our visitors.

Grace Awbrey  
Ken Karr  
Paula Monroe  
Susie Nightingale  
Carola Ratzlaff  
Mary Tallmon  
Ralph Tallmon  
Charlie Thomas  
Doug Tyler

## 2022 Volunteer Numbers

Front door volunteers: 7  
Hours worked: 853

Facilities volunteer: 1  
Hours worked: 334

Total volunteers: 8  
Total hours worked: 1,175



Above: Carol Koenig and other Kramer family descendants held a family reunion in Lawrence and attended the public opening of the KRAMER Family Research Room in October.

Left: The KRAMER Family Research Room is officially open to the public. The newly renovated space can now accommodate researchers interested in a range of topics including businesses, schools, churches, personal correspondence, and changing Lawrence city governance.

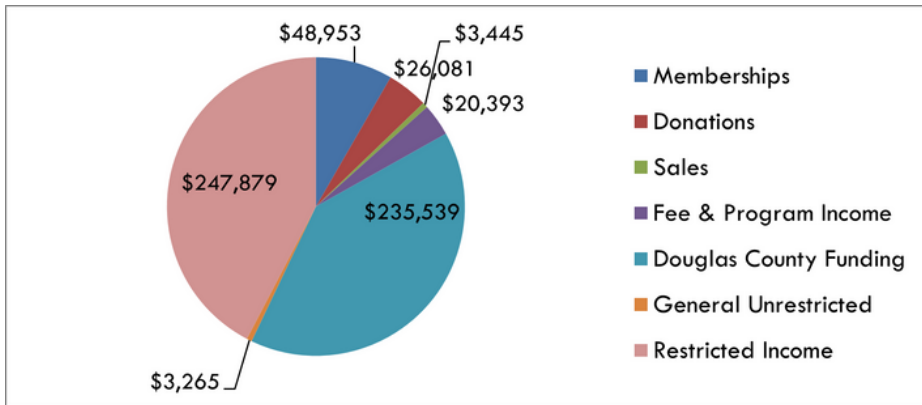


At the DCHS Annual Meeting, Carola Ratzlaff won Volunteer of the Year for her outstanding dedication and time to the Watkins Museum.



# Grants and Financials

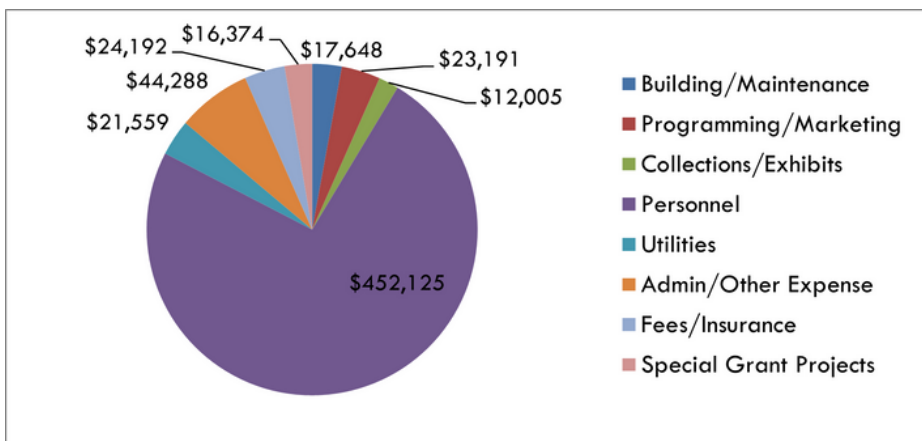
- City of Lawrence, \$13,000 to support marketing and social media outreach
- Douglas County ARPA Community Partner Grant, \$732,539 for capital improvement projects at the Black Jack Battlefield and Nature Park, Eudora Community Museum, Territorial Capital Museum, Wakarusa River Valley Heritage Museum, and Watkins Museum of History
- Douglas County Community Foundation Giving for Good Campaign matching grant, \$2,500 for collections processing and storage materials
- Douglas County Heritage Conservation Council Natural and Cultural Heritage Preservation Grant, \$13,000 for Oak Hill Cemetery Potter's Field Community Remembrance project
- Hall Center for the Humanities Stories for All grant, \$7,000 to support website redesign and digital storytelling projects
- Humanities Kansas, \$10,000 for Oak Hill Cemetery Potter's Field Community Remembrance Project
- Institute of Museum and Library Services INSPIRE! Grant, \$49,980 for online educational resources at the Eudora Community Museum, Territorial Capital Museum, Wakarusa River Valley Heritage Museum, and Watkins Museum of History
- Lawrence St. Patrick's Day Parade, \$23,000 for DEIA educational programming
- Ethel and Raymond F. Rice Foundation, \$24,500 to support research services and KU and Haskell internship programs
- Sunderland Foundation grant, \$100,000 for the renovation of archives storage and collections processing and work areas



FY 2022 Income: \$585,555



NATIONAL  
ENDOWMENT  
FOR THE  
HUMANITIES



FY 2022 Expenses: \$611,382



# Membership

The Douglas County Historical Society closed out 2022 with 348 members. Membership dues totaled \$47,953 for the year. Members also donated an additional \$26,081 that went toward the museum's general operating budget. In total, members contributed an impressive \$74,034 to the museum in 2022. We are so grateful to each of you for supporting the museum and enabling us to share and preserve the stories of local history. Thank you!

## **J. B. Watkins Fellows** **(\$2,500+)**

Kathleen &  
Bill Argersinger  
Judy & Dave Billings  
Dennis Domer  
Tom Harper  
Stephen & Marcia Hill  
Steven Jansen  
Carol Koenig  
Mabel Rice  
Bill Tuttle &  
Kathryn Nemeth Tuttle

## **Benefactor (\$1,000-\$2,499)**

David & Mary Kate Ambler  
Katie Armitage  
Tom & Grace Carmody  
Jerree & Harley Catlin  
Patrick &  
Maureen Costello  
Amanda & Josh Davis  
Candice Davis  
Chris Earl & Oliver Minnis,  
Stephens Real Estate  
Ann Gardner &  
Tom Gleason  
Sandra Gautt  
Pat & Ned Kehde  
Denise Kester  
Coyla Lockhart  
John Nalbandian  
Mary Beth & David Petr  
John & Ardith Pierce  
Cathy Reinhardt &  
Norman St. Laurent  
Ken &  
Mary Margaret Rowen  
Gary Smith  
Steve & Pat Sublett  
The Bowersock Mills &  
Power Company  
Laurie Ward

## **Patron (\$500-\$999)**

Abby & David Magariel  
Mary & Brower Burchill  
Peter & Rosalea Carttar  
Leslie Christenson

Janet Cinelli & Eric Ryan  
Michael & Kathleen Delaney  
Robert &  
Katherine Dinsdale  
Tom & Marilyn Dobski  
Dr. John & Ines Gilbert  
Web & Joan Golden  
Nancy Helmstadter  
Raymond &  
Mary Lee Hummert  
Larry Irick  
Robert Jochem  
John & Muff Kelly  
Bil King

David & Jennifer Little  
Michel Loomis  
Ward Lyles  
Susan Millstein  
Judy Niebaum &  
Dave Marden  
Lois Orth-Lopes &  
Steve Lopes  
Sue & Roger Pine  
Kathleen & Gary Sebelius  
John & Deanell Tacha  
Dan Watkins  
Bob & Deborah Werts  
Mike & Linda Wildgen

## **Supporter (\$250-\$499)**

Lauren Ballard  
Diana Carlin & Joe Pierron  
David Dunfield &  
Pat Graham  
Marci Francisco &  
Joe Bickford  
Stephen Glass &  
Terese Gorman  
Sue & Al Hack  
Michael & JoAnn Hageman  
Peter & Margaret Haggart  
Rev. Charles &  
Dr. Jennifer Henery  
Stan & Joni Hernly  
Norma Decker Hoagland  
Evan Holt  
Jane & Mickey Imber  
Ken Karr  
Marty & Patty Kennedy

Jeanne Klein  
Carol & Dave Kyner  
Jim Larkin, Warren  
McElwain Mortuary  
Gayle B Matchett  
Linda B. McCoy  
Paula & Alan Monroe  
Jerry Nossaman  
Bryan Patten &  
Molly Hill Patten  
Jim Peters & Gary Mohrman  
Suzanne Sherr  
Ralph Tallmon &  
Mary Eastwood-Tallmon  
Verdell & Izetta Taylor  
Steve & Lori Tesdahl  
Victoria Thomas  
Michael Wray

## **Associate (\$100-\$249)**

Helen & Dave Alexander  
Brad Allen & Erin Bennett  
Nathan Anderson &  
Patty Hayden  
Maria Arnone &  
Eric Anderson  
Steven Bell &  
Lonni Steele Bell  
Grace Endacott Brooks  
Rex Buchanan &  
Mindy James  
Mark & Marsha Buhler  
Kate Campbell  
Margaret Coggins  
Maria Cuevas & Jackie Berra  
Cris & Ron Darmon  
Virgil & Jan Dean  
David E. & Elizabeth  
Domann Charitable Fund  
Vicki & Joe Douglas  
Debra Duncan  
Abby Ehling  
Jan Elder  
Charles & Jane Eldredge  
Marcia Epstein &  
Kyle Thompson  
Karen Willey, Scott &  
Katherine Eudaly  
Ann Evans

Kurt Falkenstien  
Teri Finneman  
Connie Friesen  
Mary & David Gage  
Phil Godwin  
Marilyn Gridley  
Lisa Grossman  
Cynthia & James Haines  
Charles Hawkins  
Michael Heck &  
Elizabeth Cook  
David Henry  
J. Eric Henry  
Clenece Hills  
Dick & Sue Himes  
Eva Horn & Steve Warren  
John & Janet Huchingson  
John & Sheila Immel  
Robert & Sheryl Jacobs  
Don & Alice Ann Johnston  
Charles & Carol Jones  
Evan & Mary Jorn  
David & Sharyn Katzman  
Tim & Judy Keller  
Joseph Krahn  
Anita Larson &  
Tom Arensberg  
Eileen Larson &  
John Naramore  
Michael, Therese, &  
Nina Lawrence  
Mike & Susan Leavy  
Jenny & Cliff Linton  
Diane & Don Low  
John & Linda Lungstrum  
Julia & Joel Manglitz  
Richard Martin  
Barbara Mason &  
Ron Christ  
Larry & Linda Maxey  
The Rev. Dr. Sara Maypole  
Newton C. McCluggage  
Scott Michie  
Allan & Sandi Miller  
Rick Mitchell  
Scott & Kathleen Morgan  
Daniel Nagengast &  
Lynn Byczynski  
Jim & Beverly Naismith

# Membership

## Associate continued

Nancy K Nielsen  
Susie Nightingale  
Andrea Norris &  
Tom Beisecker  
Steve Nowak  
Jerry & Joan Nowak  
Gregory Ohlmacher  
Mark & Susan Osborn  
Gerald & Jeanne Pees  
Sandy & Mark Praeger  
Mick Ranney &  
Amber Harden  
Evie & Michael Rapport  
Pam & Steve Reiz  
Harold & Donna Riehm  
Peter Rinn & Barbara Wiley  
Barbara Rosewicz  
Stan & Janet Roth  
John & Virginia Saylor  
Susan Schmidt  
Carol Schmitt &  
Wayne Propst  
Barbara & Dick Schowen  
Bob & Sandra Schumm  
Elizabeth Sheehan  
Jan Sheldon & Jim Sherman  
Jean Shepherd  
Fred & Lilian Six  
Dale Slusser & Sherry Fowler  
John & Patricia Solbach  
Gary & Connie Sollars  
Byron & Marion Springer  
Ruth D Stoebener  
Eric Struckhoff &  
Paige Nichols  
Julie Taylor  
Toni Taylor  
Charles & Cheryl Thomas  
Marcia Epstein &  
Kyle Thompson  
Doug & Karen Tyler  
Lorie A. Vanchena  
Kurt & Pennie von Achen  
Dustin & Kathy Walker  
Chuck & Karen Warner  
Barbara Watkins  
Peter & Elizabeth Welsh  
Glenn Willey  
Sean Williams  
Virginia Wulfkuehl

## **Household (\$75-\$99)**

Fred & Sue Anne Atchison  
Nancye Ballard  
Rita Beyer  
Jane & Rich Bireta

Mary Ann Brenner  
Susan Brosseau &  
William Kalinich  
Sharon Brown  
Dennis J Brown  
Angela Candela &  
Michael Morley  
David & Elizabeth Cateforis  
Marjorie Cole  
Peter & Virginia Curran  
Stephen & April Evans  
Suzan Hampton &  
Kourosh Raean  
Marilee & Dennis Harper  
Carol & Don Hatton  
Anne & John Hedeman  
Jene Herron  
Thad Holcombe  
Stan & Joni Hughes  
Jean Kibbe  
Lisa & Becky LaBlanc-Willis  
John & Carolyn Landgrebe  
Karen Elaine Lassman  
Peggy Lehosit  
Breck & Grace Angel Marion  
William Miller &  
Elizabeth Miller  
Bob & Patsy Moody  
Martin H. Owens  
Charles & Dorothy Quinn  
Derek & Debbie Rogers  
Deb & Ray Rowden  
Dr. Charles &  
Catherine Sanders  
Ron Schorr &  
Georgann Eglinski  
Nancy Taylor Shivers  
Ivan George Smith, Jr. &  
Terry L Smith  
Kent Stafford & Lisa Simon  
Paul Stuewe & Beth Wasson  
Linda & Jim Thompson  
Robert Thorp &  
Karen Brock  
Jeff Weinberg &  
Mary Haynes Weinberg  
George Wiley &  
Kathleen Bradt  
Frank Ybarra & Janet Buie

## **Individual (up to \$50)**

Deena Amont  
Michael E. Arp  
Paul Bahnmaier  
Margaret Bayer  
Kevin Boatright  
Lorna Brown

Glenn Brunner  
Angela Candela &  
Michael Morley  
George Catt  
Marilyn Chamberlin  
Ginger Chance  
Walt & Toni Clogston  
Clark H Coan  
Fred Sack & Jenna Coker  
Judy Culley  
Eliza Darmon  
Karen DeVictor  
Mary Kay Digby  
James Dunn  
Kristen Epps  
Amber Fraley  
Frank Goebel  
Cap & Kitty Gray  
David Hann  
Karol Haynes  
William Haynes  
Janet Horner  
Vickie & Bert Hull  
Bernard Judge  
Audrey Kamb-Studdard  
Dan Karasek  
Thomas F Keegan, Sr.  
Molly Kirk  
Penelope Sue Kozeny  
Beth Krishtalka  
Roy & Kathy Lafferty  
Karen Lenzen  
Tanya Longabach  
Jeff Lough  
Carey Maynard-Moody  
Carla Mumma  
Shelley Page  
Denise Pettengill  
Don Pierce  
Kris Roberts  
Gordon Sailors  
Margaret Schwartzburg  
Harriet Shaffer  
Carol Shankel  
Allison Sinkler  
Shelley Skie  
Dona Snead  
Jon Standing  
Diane & Brian Stoddard  
Lauren Taylor  
Aiden Toms  
Christine Traner  
Carol von Tersch  
Craig Voorhees  
K. T. Walsh  
Christopher Warren  
Judy Wasko

G. Faye Watson  
Cathie Whitlock  
Sandra Wiechert  
William Winkler  
Mary Louise Wright  
Holly Zane

## Organizational Members

Allen Public Library  
Coneflower Consulting  
Downtown Lawrence, Inc.  
Eudora Area Historical Society  
eXplore Lawrence  
Franklin County Historical  
Society  
Johnson County Museum  
Kitchen 8  
Lawrence Business Magazine  
Lecompton Historical Society  
New Generation Society  
of Lawrence  
Riley County Museum  
Wakarusa River Valley  
Museum  
Wyandotte County Museum

## Corporate Sponsors

Brits  
Emprise Bank  
John Nalbandian  
Latchkey Deli  
Lawrence Preservation  
Alliance  
Stephens Real Estate  
Tom Harper

## 2023 Membership

### Renewal

Renew your membership by  
clicking the donate button  
below or find out when your  
membership is due by  
contacting Natalie Vondrak at  
[nvondrak@watkinsmuseum.org](mailto:nvondrak@watkinsmuseum.org)

**DONATE**

# Community Outreach

The museum increased its media and community presence in creative ways in 2022. To access online content follow the museum on social media or visit [www.watkinsmuseum.org](http://www.watkinsmuseum.org).



Outreach Committee board members promoted museum events and exhibits at the Lawrence Farmers' Market. The committee tabled a total of six times and tallied up 389 engagements with the public.



The on-going KLWN radio program *Time Capsule with the Watkins Museum*, aired 26 shows in 2022. Episodes explore Douglas County history and the people who helped shape it's communities. Tune in by visiting the [Explore Online webpage](#).



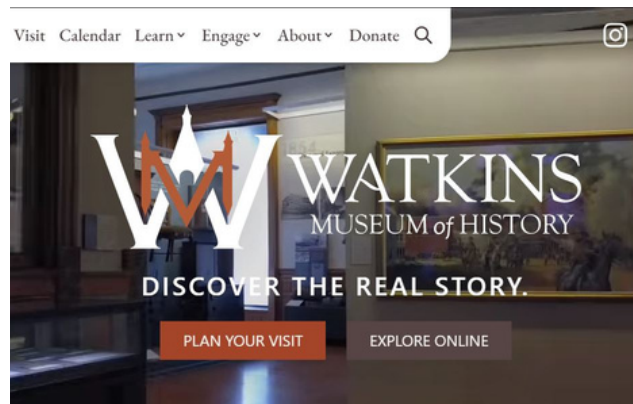
*The Museum Minute* aired eight episodes in 2022. The on-going project features staff and board members sharing one-minute stories about artifacts and exhibits on display in the museum. In November, the project won a Technology Award at the Kansas Museums Association conference.



The Watkins expanded its outreach efforts in October by co-hosting *Eerie Evening: Team Trivia Event* with Coneflower Consulting. All proceeds from the fun and light-hearted program supported the Oak Hill Cemetery Program Committee.



Staff teamed up to build a float and walk in the 2022 St. Patrick's Day Parade. They passed out coloring sheets to hundreds of children along the 2.5 mile trek to North Lawrence.



The museum launched its new website with the help of Coneflower Consulting. The site offers more opportunities for visitors to engage online with exhibits, blogs, and lesson plans.